

# Word of the Day

## Autumn Term 2025

Week 14 – 1st December 2025



*'Words unlock the doors to a world of understanding...'*

# This Week's Words

Grasshopper

**heart**

**doctor**

**hospital**

**nurse**

**injection**

Shinobi

**idiosyncratic**

**exuberant**

**ambidextrous**

**calamitous**

**loquacious**



**VOCABULARY NINJA**

# Grasshopper (Tier 1)

**heart**

**doctor**

**hospital**

**nurse**

**injection**



**VOCABULARY NINJA**

# Shinobi (Tier 2)

**idiosyncratic**  
**exuberant**  
**ambidextrous**  
**calamitous**  
**loquacious**



**VOCABULARY NINJA**



# Grasshopper Word of the Day

Word of the Day:

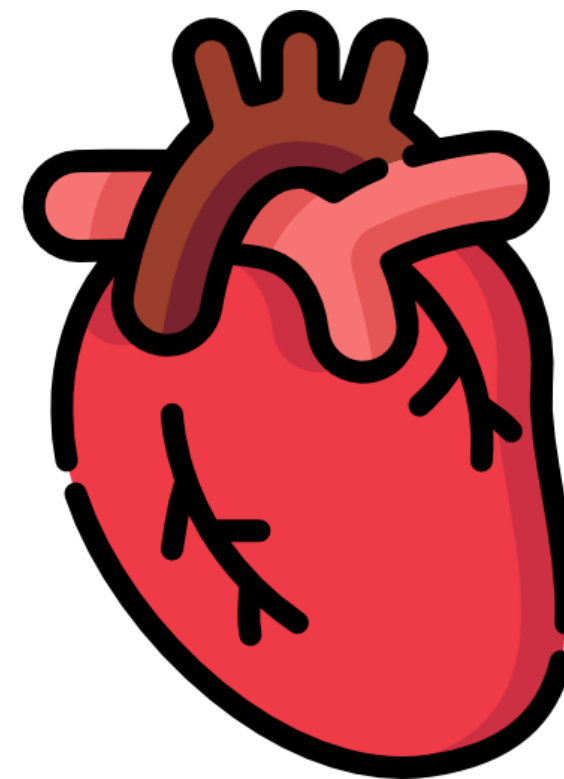
Pronunciation / Syllables

heart  
(heart)

Word Class  
(noun)

Definition:

Your heart is the organ in your chest that pumps the blood around your body. People also use heart to refer to the area of their chest that is closest to their heart.



My heart was beating in my chest.

Synonym:

ticker

clock

Antonym:

Prefix / Suffix:

-s

-y

Rhyme:

part

start

Link Word:

broken

beating



# Grasshopper Word of the Day

Word of the Day:

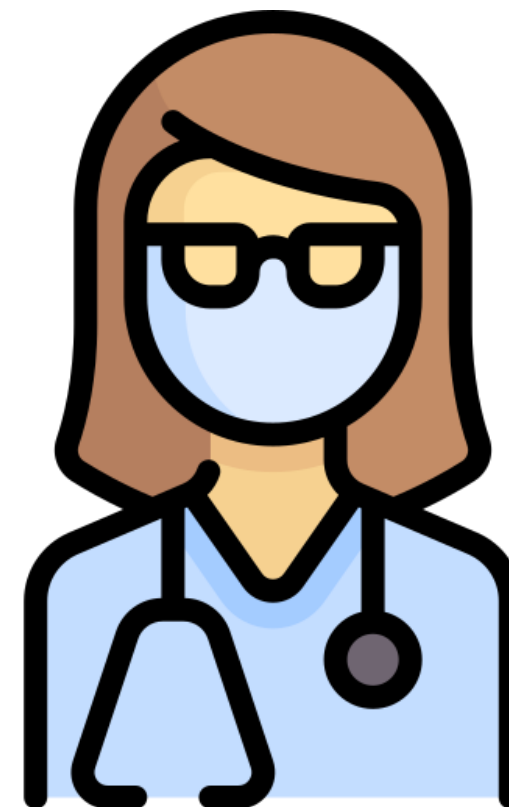
Pronunciation / Syllables

doctor  
(*doc-tor*)

Word Class  
(noun)

Definition:

A doctor is someone who is qualified in medicine and treats people who are ill.



The **doctor** talked to the patient.

Synonym:

Dr.

physician

Antonym:

patient

Prefix / Suffix:

-s

-ate

Rhyme:

Link Word:

caring

skilful



# Grasshopper Word of the Day

Word of the Day:

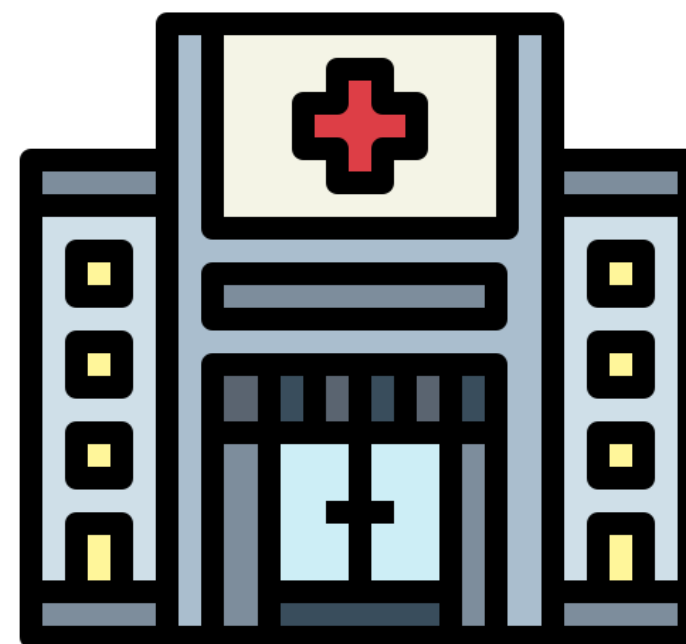
**hospital**  
(*hos-pi-tal*)

Word Class  
(noun)

Pronunciation / Syllables

Definition:

A hospital is a place where people who are ill are looked after by nurses and doctors.



The **hospital** looked after the sick patients.

Synonym:

clinic

health centre

Antonym:

Prefix / Suffix:

post-

-s

Rhyme:

Link Word:

private

emergency



# Grasshopper Word of the Day

Word of the Day:

Pronunciation / Syllables

nurse  
(*nurse*)

Word Class  
(noun)

Definition:

A nurse is a person whose job is to care for people who are ill.



**Nurses** worked in the hospital with patients.

Synonym:

carer

matron

Antonym:

Prefix / Suffix:

-s

-ry

Rhyme:

worse

verse

Link Word:

caring

paediatric





# Grasshopper Word of the Day

Word of the Day:

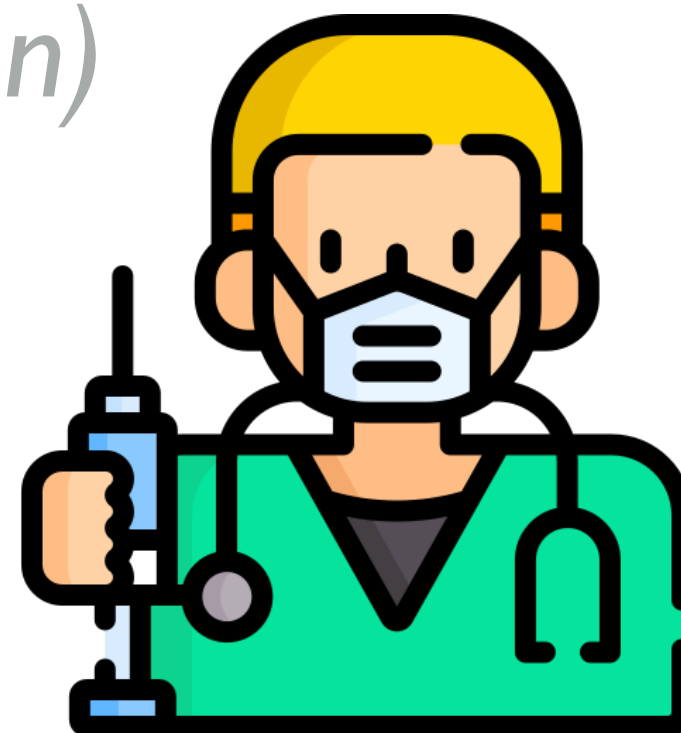
**injection**  
(*in-jec-tion*)

Word Class  
(noun)

Pronunciation / Syllables

## Definition:

If you have an injection, a doctor or nurse puts a medicine into your body using a device with a needle called a syringe.



Jenny needed an **injection** to keep her safe.

Synonym:

inoculation

vaccination

Antonym:

Prefix / Suffix:

post-

-s

Rhyme:

section

direction

Link Word:

administer

local



# Shinobi Word of the Day

Word of the Day: **idiosyncratic** Word Class  
(adjective)

Pronunciation / Syllables *(id-i-o-syn-cratic)*

## Definition:

If you describe someone's actions or characteristics as idiosyncratic, you mean that they are rather unusual.



The headteacher was unique and **idiosyncratic**.

Synonym:

individual  
distinctive

Antonym:

Prefix / Suffix:

-ally

Rhyme:

democratic  
systematic

Link Word:

highly  
paediatric



# Shinobi Word of the Day

Word of the Day: **exuberant**

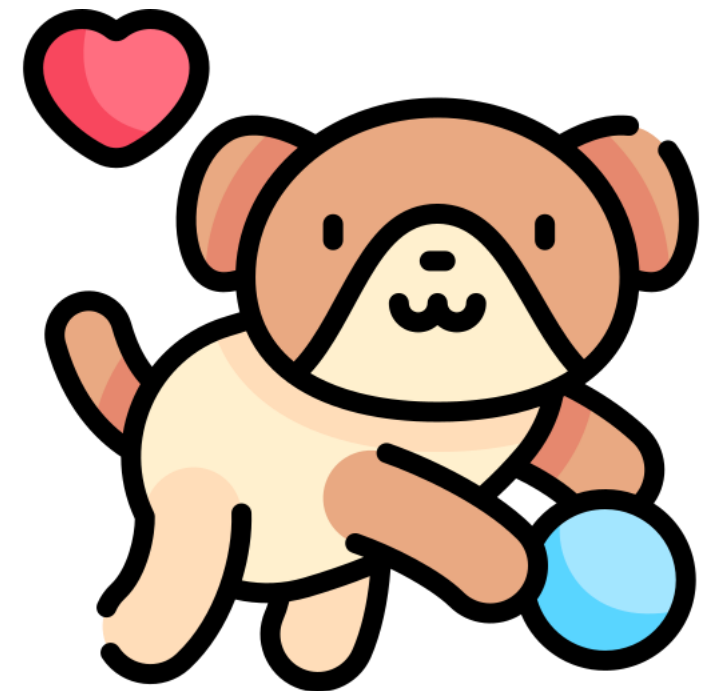
Word Class  
(adjective)

Pronunciation / Syllables

(*ex-u-ber-ant*)

## Definition:

If you are exuberant, you are full of energy, excitement, and cheerfulness.



Jen's **exuberant** puppy never stopped playing.

Synonym:

cheerful

energetic

Antonym:

gloomy

depressed

Prefix / Suffix:

-over

-ly

Rhyme:

Link Word:

completely

highly



# Shinobi Word of the Day

Word Class

Word of the Day: **ambidextrous** (adjective)

Pronunciation / Syllables

(*am-bi-dex-trous*)

## Definition:

Someone who is ambidextrous can use both their right hand and their left hand equally skilfully.



The skilful artist was **ambidextrous**.

Synonym:

Antonym:

Prefix / Suffix:

Rhyme:

Link Word:

dextrous

surprisingly

naturally



# Shinobi Word of the Day

Word of the Day: **calamitous**

Word Class  
(adjective)

Pronunciation / Syllables

(*ca-lam-i-tous*)

## Definition:

If you describe an event or situation as calamitous, you mean it is very unfortunate or serious.



The **calamitous** twins destroyed the playroom.

Synonym:

disastrous

devastating

Antonym:

good

harmless

Prefix / Suffix:

-ly

Rhyme:

glamorous

Link Word:

potentially

prove



# Shinobi Word of the Day

Word of the Day:

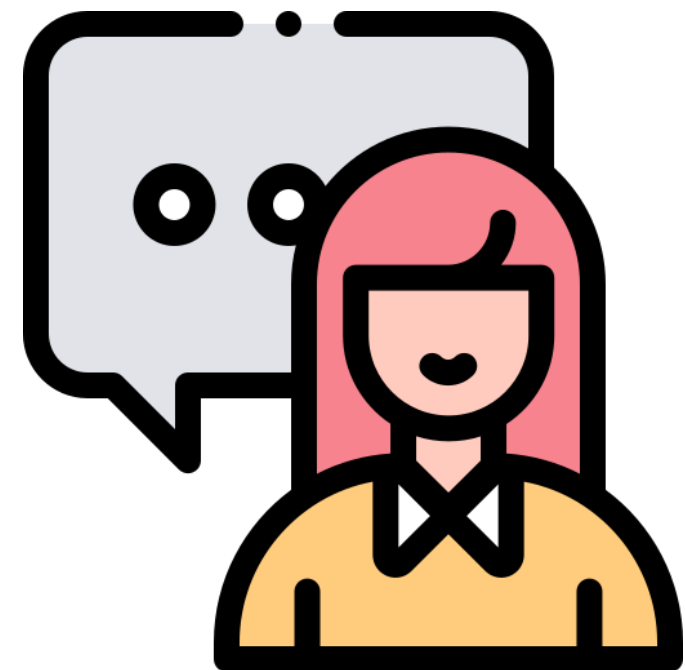
loquacious  
(lo-qua-cious)

Word Class  
(adjective)

Pronunciation / Syllables

## Definition:

If you describe someone as loquacious, you mean that they talk a lot.



Miss Robson was so **loquacious**.

Synonym:

talkative

chatty

Antonym:

quiet

silent

Prefix / Suffix:

-ness

Rhyme:

gracious

spacious

Link Word:

naturally

extremely

# Vocabulary Laboratory



Describe / Definition:

Use it in a sentence:

Focus Word (write below):

Word Class:

Synonyms:

(words with same / similar meaning)

Antonyms:

(words with opposite meaning)

Draw your sentence:

Rhymes:

(words that sound the same)

Link Words:

(Example: football = pitch, team, player)

# Vocabulary Visualiser

Draw the  
**Grasshopper** words  
and bring them to life.



Word: heart

Word: hospital

Word: doctor

Word: nurse





# Vocabulary Visualiser

Draw the **Shinobi**  
words and bring  
them to life.



Word: idiosyncratic

Word: calamitous

Word: exuberant

Word: loquacious



# Matching Meanings

Draw lines from the **Grasshopper** words to their definitions.



## Grasshopper Word

## Grasshopper Definitions

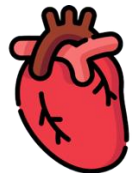
heart

If you have an \*\*\*, a doctor or nurse puts a medicine into your body using a device with a needle called a syringe.



doctor

Your \*\*\* is the organ in your chest that pumps the blood around your body. People also use \*\*\* to refer to the area of their chest that is closest to their \*\*\*.



hospital

A \*\*\* is a place where people who are ill are looked after by nurses and doctors.



nurse

A \*\*\* is a person whose job is to care for people who are ill.



injection

A \*\*\* is someone who is qualified in medicine and treats people who are ill.



# Matching Meanings

Draw lines from the **Shinobi** words to their definitions.



## Shinobi Word

## Shinobi Definitions

idiosyncratic

If you are \*\*\*, you are full of energy, excitement, and cheerfulness.



exuberant

If you describe an event or situation as \*\*\*, you mean it is very unfortunate or serious.



ambidextrous

If you describe someone as \*\*\*, you mean that they talk a lot.



calamitous

Someone who is \*\*\* can use both their right hand and their left hand equally skilfully.



loquacious

If you describe someone's actions or characteristics as \*\*\*, you mean that they are rather unusual.





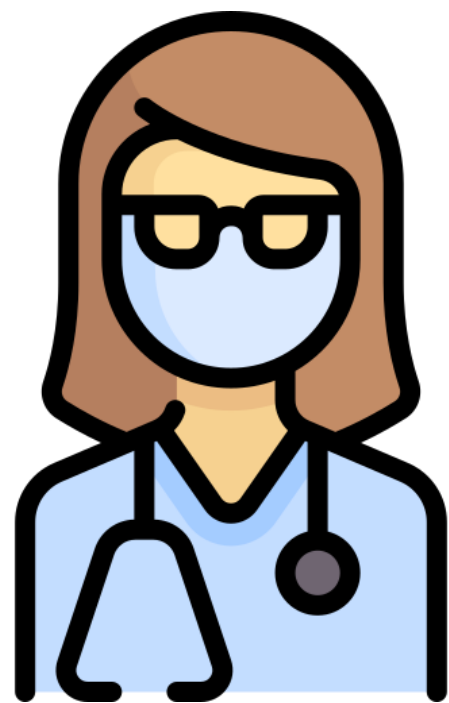
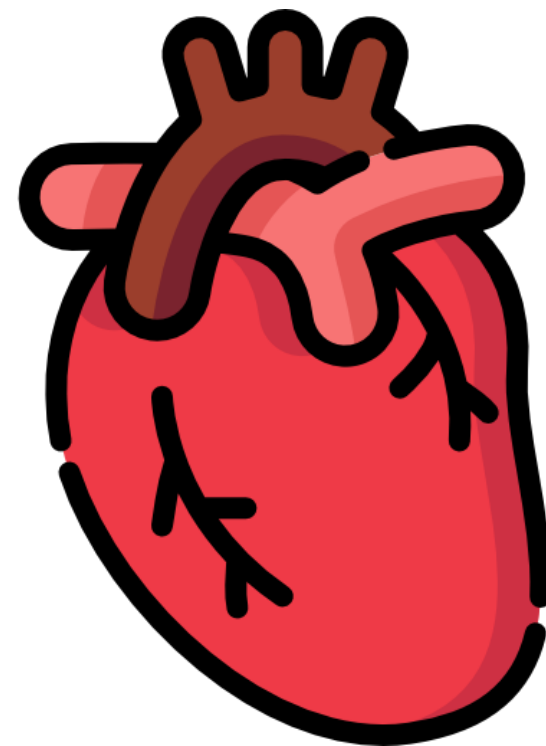
# Display Slips

The following slides are for classroom display. As you teach each Word of the Day, words can be displayed in the classroom to enable pupils to use the taught vocabulary in an independent manner.





# heart

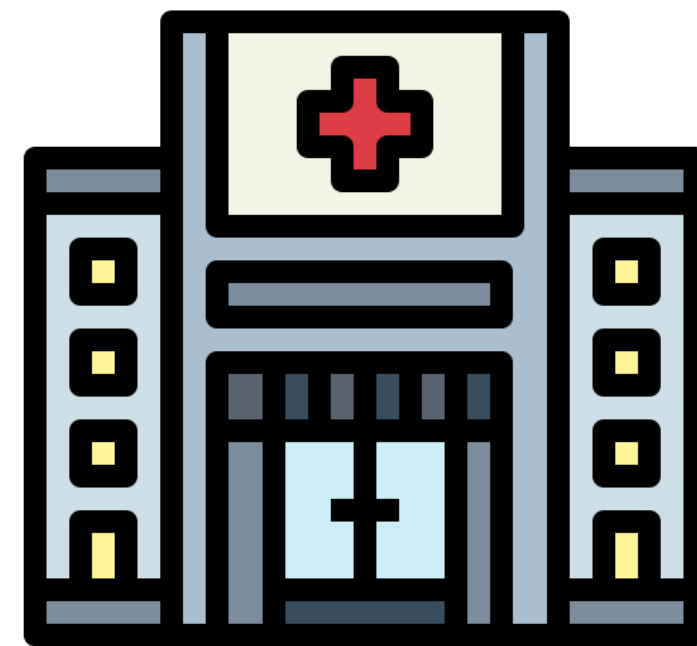


# doctor





# hospital



# nurse





# injection

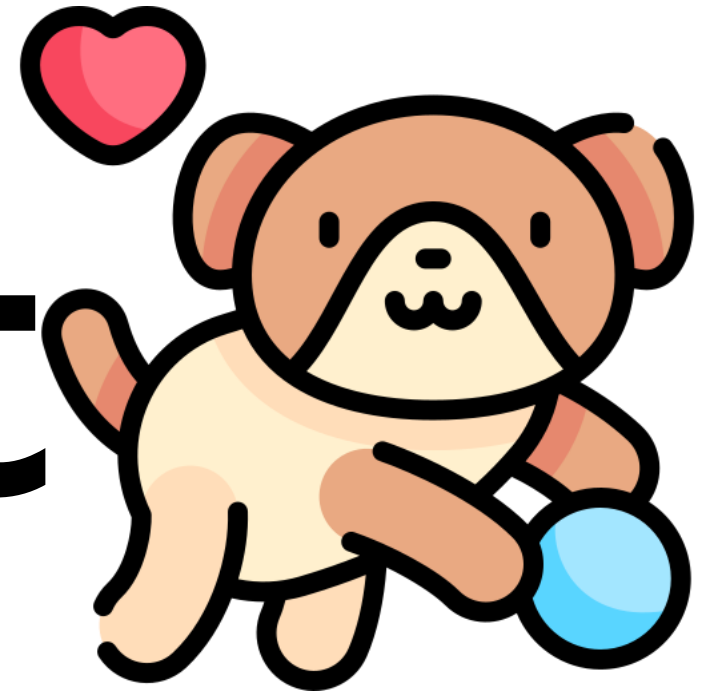


# idiosyncratic





# exuberant



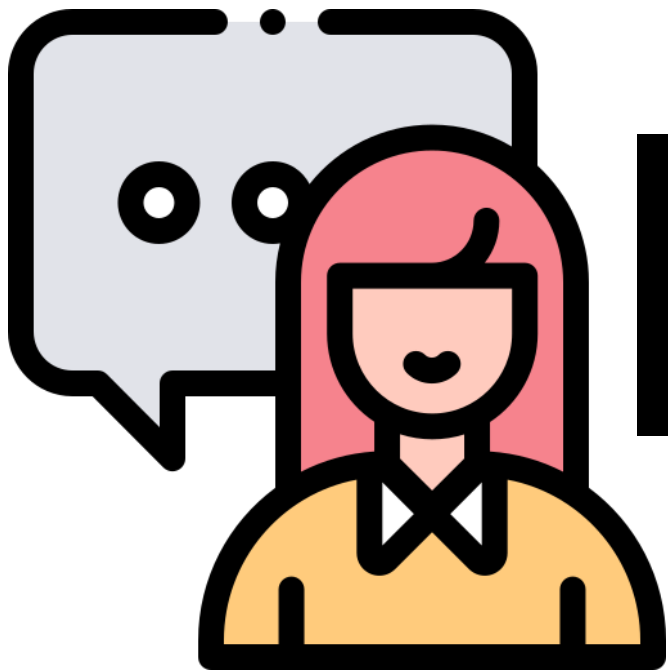
# ambidextrous







# calamitous



# loquacious

